



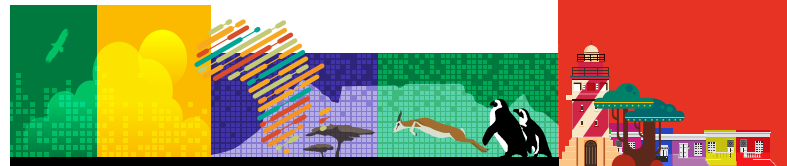
CAPE TOWN
GOES
VIRTUAL

**11TH CONGRESS OF
THE WORLD FEDERATION
OF PEDIATRIC
INTENSIVE & CRITICAL
CARE SOCIETIES
12-16 JULY, 2022**

Sponsorship & Exhibition Prospectus

Presented by:





GENERAL INFORMATION

THE CONGRESS DETAILS

Dates: July 12-16, 2022

Website: <https://wfpiccs.org/wfpiccs-2022/>

Location: Virtual on a Dynamic Online Platform

Time Zone: Time zone of the congress is South African time zone which is 2 hours ahead the Greenwich Mean Time (GMT+2). Any time details shown on the congress program are given according to this time zone.

Estimated Number of Participants: Around 2.000 participants are expected to attend.

AUDIENCE PROFILE

Pediatric intensivists, neonatal critical care specialists/neonatologists, neonatal/pediatric nurse practitioners, pediatric-focused advanced practice registered nurses (APRNs), respiratory therapists, physician assistants, pediatric nutritionists, anesthetists, pediatric cardiologists, physiotherapists, social workers and child life specialists.

IMPORTANT DATES & DEADLINES

Abstract submission deadline:
January 24, 2022

Early registration deadline:
April 11, 2022

Regular registration:
April 12 – July 4, 2022

Onsite registration:
July 5, 2022

CONTACT / THE CONGRESS ORGANIZING SECRETARIAT, PCO



Office: Kenes M+

Sponsorship & Exhibition Inquiries:

Mr. Daghan Sivaci | E-mail: dsivaci@kenes.com | Mobile: +90 555 169 9984

Registration Inquiries:

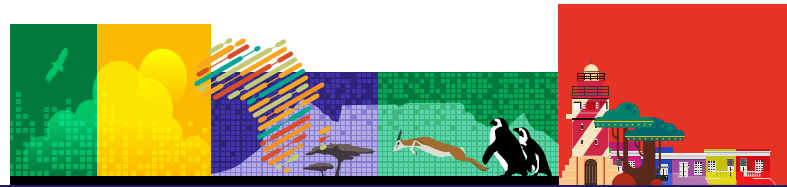
Ms. Pinar Eresici
E-mail: peresici@kenes.com
Ms. Neyir Utugen
E-mail: nutugen@kenes.com
Ms. Ilayda Damar
E-mail: idamar@kenes.com

Scientific Inquiries:

Ms. Mojca Rodic
E-mail: mrodic@kenes.com
Ms. Melis Angelini
E-mail: mangelini@kenes.com

Any Other Inquiries:

Ms. Pinar Akbulut
E-mail: pakbulut@kenes.com



GENERAL INFORMATION

WELCOME LETTER

Dear Industry Partners,

From Cape Town, South Africa, to the World, it is our great pleasure to welcome you to the **11th World Congress of the World Federation of Pediatric Intensive & Critical Care Societies (WFPICCS)**, on **13-16 July 2022**.

The local scientific and organizing committees are delighted to have the opportunity to collaborate with WFPICCS in planning an unforgettable **virtual congress** based in Cape Town – the Gateway to Africa!

With a unique African flavor, the Congress will be tailored to the entire interprofessional WFPICCS community of physicians, nurses, scientists, and allied health professionals, providing a platform to advance professional knowledge, enhance skills, share experience and network with colleagues and friends from around the world. Together we aim towards improving paediatric critical care across the globe, so that every child has the best chance of survival and quality of life following critical illness or injury. In particular, we hope that this congress will provide the necessary impetus to advocate for improved paediatric critical and intensive care services across Africa, for which there is a pressing need.

The over-arching theme of the Congress is **“Ubuntu”** – an Inguni term roughly translated as **“I am because we are”** – it speaks to the belief that we are defined by our compassion and kindness toward others. In this spirit, the Congress organizers have made the difficult decision to once again hold the event virtually, considering the Covid19 pandemic currently raging across the world, which would prevent many colleagues from attending in person. The virtual event will enable delegates from across the world to attend and benefit from the excellent programme, without personal risk and at considerably reduced financial and environmental cost.

WFPICCS 2022 will deliver a high quality scientific programme, sharing the latest developments in paediatric intensive and critical care across the spectrum from basic science to the bedside and beyond to global health challenges and opportunities. The programme will include daily plenary sessions, pre-congress workshops and “round-table” discussions, with opportunities to meet (using state of the art virtual technology) and discuss specific and diverse topics with experts in the field, from a range of professional and sociogeographic backgrounds across the world. There will also be scope for emerging researchers to share their work and generate discussion and critical review. In addition to the stimulating academic programme, we will host various fun social activities online, to give delegates an opportunity to relax, get to know one another better and experience a virtual taste of South Africa’s rich and diverse heritage. This is an exciting opportunity not to be missed!

Cape Town is known as the “Mother City”, nestled between the ocean and the iconic Table Mountain at the Southern tip of Africa. It is a city with rich cultural and natural heritage and diversity, with access to a wealth of tourism opportunities throughout South Africa and the continent. We hope to share some of these opportunities with you, so that we can welcome you in person once the world recovers from this devastating pandemic. We look forward to seeing you virtually in 2022 and expect that you will be a part of WFPICCS 2022 congress with your valuable support.

LOC/LSC Co-chairs



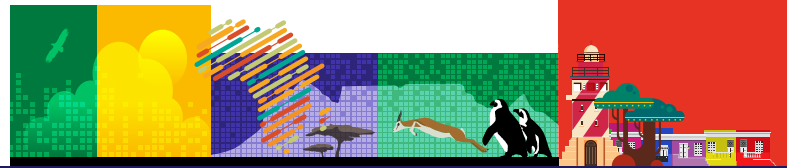
Brenda Morrow



Andrew Argent

International Scientific Committee Chairs:

Lauren Sorce, Intikhab Zafurallah and Sarah Wright



COMMITTEES

LOCAL ORGANISING COMMITTEE

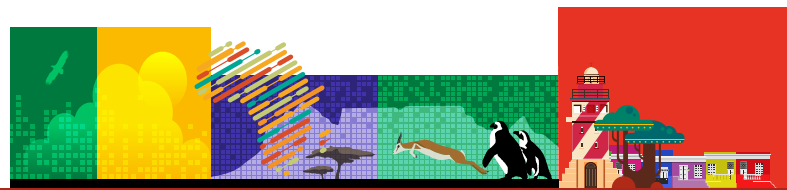
Brenda Morrow, South Africa – Co-Chair Nursing/Allied
Andrew Argent, South Africa – Co-Chair Medical
Mignon McCulloch, South Africa
Heide Kunzmann, South Africa
Ilse Appel, South Africa
Shivani Singh, South Africa
Charlyne Kilba, Ghana
Asma Salloo, South Africa
Marti Wege, South Africa
Satoshi Nakagawa, Japan
Stephen Jacobe, Australia
Ann-Marie Brown, United States
Natalie Duns, Australia
Jeffrey Burns, United States

LOCAL SCIENTIFIC COMMITTEE

Brenda Morrow, South Africa – Co-Chair Nursing/Allied
Andrew Argent, South Africa – Co-Chair Medical
Mignon McCulloch, South Africa
Shamiel Salie, South Africa
Clare Davis, South Africa
Kuban Naidoo, South Africa
Minette Coetzee, South Africa
Prakash Jeena, South Africa
Susan Murphy, South Africa
Lincoln Solomon, South Africa
Kaizer Fitswanga, Kenya
John Appiah, Ghana
Alison Lupton-Smith, South Africa
Shannon Cawood, South Africa
Hans-Joerg Lang, Germany
Beyra Rossouw, Australia
Claire Procter, South Africa

INTERNATIONAL SCIENTIFIC COMMITTEE

Intikhab Zafurallah, United Kingdom – Co-Chair Medical
Lauren Sorce, United States – Co-Chair Nursing
Sarah Wright, Australia – Co-Chair AHP
Satoshi Nakagawa, Japan
Stephen Jacobe, Australia
Ann-Marie Brown, United States
Brenda Morrow, South Africa
Natalie Duns, Australia
Jeffrey Burns, United States
Chinmay Joshi, United Kingdom
Rishi Ganesan, Canada
Ali Ferguson, Australia
Vanessa Soares Lanzotti, Brazil
Maureen Madden, United States
Louise Kelly, United Kingdom
Fenny Shidhika, Namibia
Martha Curley, United States
Mavilde LG Pedreira, Brazil
Jacqueline (Jackie) Ong, Singapore
Akua Dwomoh Boateng, Ghana
Miguel Rodriguez-Rubio, Spain
Arun Bansal, India
Alex Hussey, New Zealand



BENEFITS OF ATTENDING & PAST STATISTICS

WFPICCS 2022 will have a positive impact on the global Pediatric Intensive and Critical Care response with the following objectives;

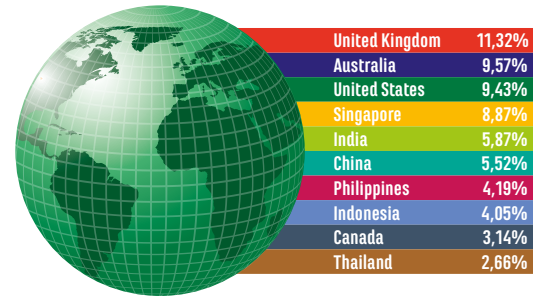
- To bring together the world's experts to catalyze and advance scientific knowledge about Pediatric Intensive and Critical Care, present the most recent research findings, and promote and enhance scientific collaborations around the world.
- To bring together physicians, nurses, allied health professionals, scientists, and policy leaders to promote and enhance programmatic collaborations to more effectively address regional, national and local responses to Pediatric Intensive and Critical Care around the world and overcome barriers that limit access to prevention, care and services.
- To engage key, new and non-traditional stakeholders throughout the world in the development of and participation throughout the WFPICCS 2022 Program.
- To illustrate the enormity of the human suffering in critically ill infants and children, and the economic cost if society fails to act on the scientific opportunities now available to improve the quality of care and clinical practice.

Industry Benefits of Supporting WFPICCS 2022 World Congress

- Promotes cutting-edge scientific research
- Contributes to the advancement of Pediatric Intensive and Critical Care on an international level
- Offers a unique opportunity to exchange ideas with renowned professionals from across the world
- Provides an ideal networking forum
- Offers unique exposure to worldwide markets



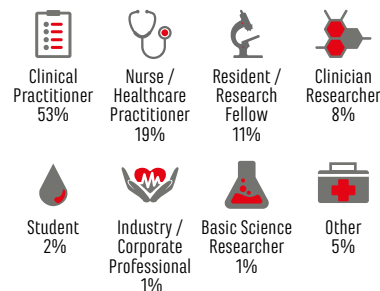
2018 Top 10 Countries



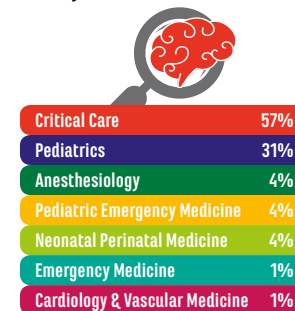
2020 Top 10 Countries



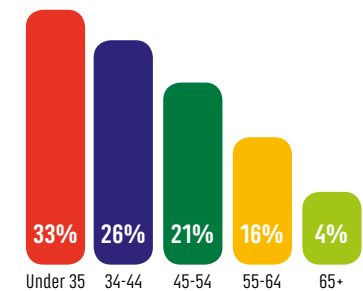
Participants of Last 2 Congresses, by Professional Role

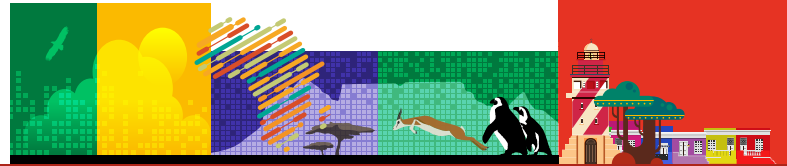


Participants of Last 2 Congresses, by Professional Interest



Participants of Last 2 Congresses, by Age





COMMITMENT TO THE HIGHEST STANDARDS IN CME/CPD

Kenes is committed to being a valuable and knowledgeable partner in the design and delivery of educationally strong, independent, transparent, and effective CME/CPD programs. Kenes is a proud member of the Good CME Practice Group (gCMEp), a member organization contributing to improving health outcomes by:

- Championing best practice in CME
- Maintaining and improving standards
- Mentoring and educating
- Working in collaboration with critical stakeholders

For more information, visit: www.gcmep.eu

CME ACCREDITATION

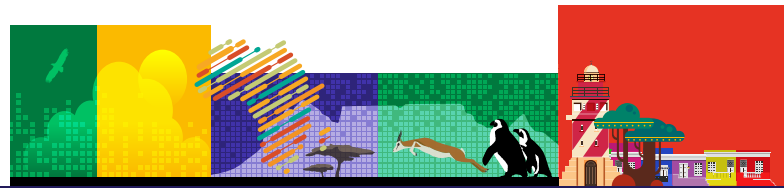
An application will be submitted to the European Accreditation Council for Continuing Medical Education (EACCME) to provide accreditation by the following CME activity for medical specialists. The EACCME is an institution of the European Union of Medical Specialists (UEMS): www.uems.net.

INDUSTRY SUPPORTED SESSION

Industry Supported Sessions slots are offered to industry as non-CME commercial/promotional sessions that are not accredited. As such supporters are free to choose their topics, invite speakers and control content, the session will be indicated in the program as organized by the Supporter. Topic and program are subject to approval by the Congress Scientific Committee.

Information contained in the scientific program must comply with the applicable CME/CPD regulations. Scientific/Educational Program shall not include any commercial elements such as company names, products names, etc. Commercial information shall be kept separate and clearly differentiated from the scientific accredited content. Non educational activities may include promotional elements and shall not be accredited.





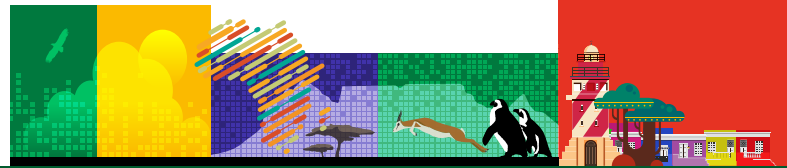
SCIENTIFIC PROGRAMME

Legend:

Plenary	Scientific Session
Pre-Cong Debrief / Plenary discussion / Networking Session	Key Address
Poster Session	Workshops & Regional Meetings
Poster Programme	Breaks

Scientific session to be re-allocated amongst the day after finalising all

WFPICCS 2022 - CONGRESS PROGRAMME			SCIENTIFIC PROGRAMME DAYS																								
WORKSHOP DAYS			JULY 12 - TUESDAY					JULY 13 - WEDNESDAY					JULY 14 - THURSDAY					JULY 15 - FRIDAY					JULY 16 - SATURDAY				
Cape Town (GMT+2)	Various Parallel Halls	Various Parallel Halls	HALL 1	HALL 2	HALL 3	HALL 4	HALL 5	HALL 1	HALL 2	HALL 3	HALL 4	HALL 5	HALL 1	HALL 2	HALL 3	HALL 4	HALL 5	HALL 1	HALL 2	HALL 3	HALL 4	HALL 5					
			07:30 - 08:45	Sunrise session: Long Covid	Sunrise session (Panel/round table): Implementing guidelines internationally	Cases over coffee	Sunrise session: TAXI CAB	Cases over coffee	Sunrise session: Pediatric PALS guidelines	Cases over coffee	Sunrise session: Social Media (TBD)	Cases over coffee	Sunrise session: PALICC 2	Sunrise session: Making best use of limited resource to optimise quality and safety	Cases over coffee	Sunrise session: Innovation in PICU: global perspectives. Moving from great ideas to actual implementation	Cases over coffee	Sunrise session: Clinical use of lung ultrasound for physiotherapy									
			08:45 - 09:00	BREAK					BREAK					BREAK													
			09:00 - 10:20	The lungs 1	The Brain - Infection and the brain	Global Science Update from across the globe	Sepsis 1	The Kidney 1	Educational Models	Quality and Safety	Liver / GIT	Global PICU Perspectives 1	Sepsis 2	ECMO	Family Care	Combined organ systems	Pharmacology: Drug therapy in the PICU	End of life care									
			09:00 - 09:20	Is it ARDS and does it matter?	Viral infections	Justice and allocation of resources	Optimising haemodynamics	What's new in AKI?	Simulation educational philosophies	Managing critically ill or injured children: by remote - telemedicine approaches	Should we revise energy estimation equations?	Developing PICU in Ghana - are we crazy?	Paediatric sepsis: A global perspective	ECMO for cardiac arrest	'Footprints for Sam'	Burden of paediatric trauma across the globe	Genetic diversity and pharmacotherapy	Withdrawing and withholding life-sustaining therapy - ethical and practical considerations									
			09:20 - 09:40	What really damages the lung during mechanical ventilation?	Bacterial infections	Paediatric covid - what is it?	What are the prospects for implementing precision therapy in sepsis?	Is there a role for PD in the modern era?	Simulation competency training - how best to do it	Lean systems for pediatric critical and emergency care	The role of liver transplantation in acute liver failure	Balancing "Western" and traditional medicine in the PICU	Viral microbiome and implications for sepsis	Anticoagulation controversies	Parental and family mental health/wellness - who's responsibility are they?	Gun violence in children	Treatment options for seizure management in PICU	Determining brain death - criteria and considerations									
			09:40 - 10:00	Weaning strategies	Tropical diseases	Infection control and the impact of Covid-19 protocols for health care professionals	Sepsis phenotypes - you may get more than you asked for!	Neonatal AKI and management thereof	Neuro: past - How do we ensure competency for point of care skills	Dealing with disasters	Short gut syndrome - how short can you get?	Oxygen monitoring and precision in LICs	Fungal sepsis in PICU	Pharmacology considerations	What is happening in the home? - How to prevent readmissions related to social determinants of health?	Burns in children	What drugs are available to support the heart across the world?	Barriers to organ procurement									
			10:00 - 10:20	Pulmonary Rehabilitation in the PICU and beyond	Use of transcranial doppler in paediatric CNS infection	How best to communicate with patients and families	Temperature thresholds in PICU	Innovations in RRT in resource limited environments	Applying the "Inverted classroom" in paediatric critical care teaching	Risk assessment - lessons from the mountains	The gut microbiome - what does it mean and does it really matter?	Management of envenomation in resource-limited settings	Tropical infectious diseases in PICU	ECMO in COVID-19 and global outcomes	Dealing with the "Frequent Flyers" - managing anxiety in those with repeat ICU admissions	Rehabilitation after severe trauma	From dreams to practice - when will be able to apply the "omicron"?	Living related organ donation - providing support when it doesn't work									
			10:20 - 10:45	BREAK					BREAK					BREAK													
			10:45 - 11:30	Nurse Scientists Session	AMP Scientists session	BREAK					BREAK					BREAK											
			11:30 - 12:00	Plenary 2: The impact of COVID-19 on PICU service and delivery					Plenary 4: Individualised care in the PICU					Plenary 6: "Climate Change: health and the future for our children"													
			12:00 - 12:30	Plenary 3: What's new and what's not in pAKI					Plenary 5: How do we make diverse (PICU) teams work					Plenary 7: The place for paediatric critical care in Africa													
			12:30 - 14:00	BREAK																							
			14:00 - 15:20	The Heart - Cardiology	Besites / Advocacy	Resuscitation	Research in PICU	Fluids & Electrolytes & Metabolism	Selection / Analgesia	The Heart - Optimising peri-operative care	Sunrise and Thirst - ICU Outcomes	Caring for the Carers 1	The Lung 2	Global PICU perspectives: technological innovations for implementing PICU care in LICs	Caring for the Carers 2	The Kidney 2	The Brain	Telomedicine									
			14:00 - 14:20	Basic science/Physiology/Anatomy	Children's rights and access to critical care	New advances	Big Data - and biobanks in PICU Research - how far should you go?	How has fluid practice changed in ICU since FEAST?	New drugs for analgesia and sedation	Perioperative planning for early extubation	Life beyond PICU, is it ever the same?	The effect of staff conflict on patient outcomes and how to resolve it	NIV and HFNC - helpful or harmful? - LMC considerations	Oxygen delivery	Nurturing and growing PICU leadership	Conservative management of AKI	Severe TBI management guidelines - where are we two years later?	Remote and robotic technology for teleconsults									
			14:20 - 14:40	Neurological considerations in congenital heart disease	ICU rights of children during mass emergencies	Challenges in CPR	Precision science - Human genome across the world and issues in genetic variation - where should research be happening for the best answers for the most people?	Fluids and nutrition - balancing water and calories	Non-pharmacological approach to pain and distress	Recognition and management of post-operative arrhythmias	Transitioning from acute to chronic critical care	Mental distress - withdrawal and withholding life-sustaining treatments	NIV/HFNC - has it helped us? - HIC considerations	Dialysis	Career planning for the "aging" PICU health professional	What is the ideal CRRT in the PICU setting?	Brain injury monitoring	Multidisciplinary considerations in telomedicine - who carries patient responsibility?									
			14:40 - 15:00	Acute and chronic heart failure in the PICU	Care planning - when parents and children don't agree	Why train CPR where there is no PICU?	Clinical Trials - Causality vs. association in research reporting - language matters!	Preventing cerebral edema in DKA - current best practice	Lived experiences of patients and caregivers with PICU Delirium	Nutritional considerations for the cardiac surgical patient	PICU outcomes - what to measure and how?	Wellness is more than absence of burnout	COAST implications	Cardiac support	Human factors in PICU - physical, emotional, cognitive	Renal angina	Non-pharmacological approach to dystonia	Telomedicine precedents - the CabChat experience									
			15:00 - 15:20	Discussion / perspective session: How do we disseminate training and support across the world to improve cardiac PICU care?	Care planning - when parents and professionals don't agree	Outcomes of cardiac arrest	What's hot and what's not - next two years of PICU research	Do fluids do harm more in LMIC? Evidence since FEAST?	Lived experiences of patients and caregivers with PICU Delirium	Nutritional considerations for the cardiac surgical patient	PICU outcomes - what to measure and how?	Wellness is more than absence of burnout	COAST implications	Diagnosis and monitoring	Human factors in PICU - physical, emotional, cognitive	Renal angina	Non-pharmacological approach to dystonia	Telomedicine precedents - the CabChat experience									
			15:20 - 15:45	BREAK																							
			15:45 - 17:00	Discussion / perspective session: How do we disseminate training and support across the world to improve cardiac PICU care?	Discussion: pediatric sepsis definitions: What do they mean to me?	Disseminating and implementing global pediatric critical care research priorities	Rare Diseases in PICU: Caring for children and families with rare conditions	Discussion: What is a "good death"?	Perspectives / Discussion session: Impact of COVID-19 on Pediatric Critical Care	Making the PICU work for the oncology patient?	Discussion: How do we define the role for the ICU team in post-discharge care?	Discussion: Research Consortium Multicenter PICU Research and research in LMIC	Discussion: Interdisciplinary team functioning to optimise comfort and safety	15:45 - 16:15 Closing ceremony	16:15 - 16:45 Plenary 8: The changing face of PICU in the 21st century	16:45 - 17:00 Handover Ceremony											
			17:30 - 18:00	BREAK																							
			18:00 - 18:30	Welcome by Congress Chairs																							
			18:30 - 19:00	Plenary 9: Positive SA patient story																							
			19:00	Welcoming Social Event / Online Toast																							



MAIN SPONSORSHIP CATEGORIES

	PLATINUM 25.000 EUR <small>(limited to 2 companies)</small>	GOLD 20.000 EUR <small>(limited to 4 companies)</small>	SILVER 15.000 EUR	BRONZE 10.000 EUR
Industry Sponsored Symposium	+	+		
Virtual Booth	Corner Large	Corner Medium	Corner Standard or Flat Large	Standard
Opportunity to get contact details of the participants who give consent for sharing their information with sponsors of the congress	+	+	+	
Acknowledgement on the congress website with a logo with hyperlink to Sponsor's website	+	+	+	+
Acknowledgement in the final programme e-book, at Sponsors' section with logo and 100-words profile	+	+	+	+
Acknowledgement on the presentation to be looping in the virtual auditorium before and after all sessions of the congress	+	+	+	+
Presence with logo of the Sponsor (together with logos of other sponsors of the same category) at the entrance of virtual congress venue	Advertisement or logo in the Front Row	Logo in the Second Row	Logo in the Third Row	
Presence with logo at the virtual lobby together with all sponsors of the congress	+	+	+	+
Acknowledgement within the branding in the virtual hall for scientific sessions	+	+		
Acknowledgement with logo in the congress e-newsletters	+	+	+	+
Opportunity to upload a pdf / video into the Virtual Congress Bags (pdf and videos to be provided by the Sponsors)	+	+		
Complimentary Exhibitor badges	8	6	4	3
Complimentary Delegate badges	4	3	2	1
Acknowledgement with logo in the post- congress reports and information	+	+	+	+
Advertisement in the Final Programme E-Book	3 full pages	2 full pages	1 full page	1/2 page
Opportunity to display a video on a digital screen in the virtual lobby**	+	+		

** 1 digital screen will be used for all platinum sponsors and 1 digital screen will be used for all gold sponsors. Videos of those sponsors will be looping on these screens back-to-back.



VISUAL SAMPLES - BRANDING SPACES

These visuals are samples from the virtual platform and might be subject to slight changes without changing the recognition level



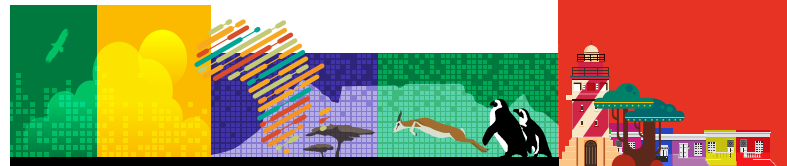
Entrance of the Virtual Conference Venue:
Spaces for Main Sponsors' logos (marked with yellow frame)



Virtual Lobby:
- Screen for Platinum Sponsors' looping videos (marked with green frame)
- Screen for Gold Sponsors' looping videos (marked with blue frame)
- Space for All Sponsors' logos (marked with yellow frame)



Auditorium:
- Banner for Platinum & Gold Sponsors' logos (marked with yellow frame)
Decision amongst the auditorium templates (both of which are shown above) will be made during the virtual system set up by the organizers.



VISUAL SAMPLES - VIRTUAL BOOTHS

The below visual designs are samples for the virtual booths that are going to be allocated for main sponsors' (platinum, gold, silver and bronze).

Different colour alternatives are available for all booths (e.g. blue, dark blue, green, dark green, yellow, orange, red, purple).

These visuals are samples from the virtual platform and might be subject to slight changes without changing the recognition level



**Virtual Stand Sample for
Platinum Sponsors: Corner Large**



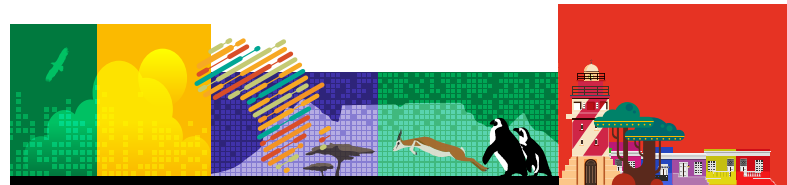
**Virtual Stand Sample for
Gold Sponsors: Corner Medium**



**Virtual Stand Sample for
Silver Sponsors: Corner Standard or Flat Large**



**Virtual Stand Sample for
Bronze Sponsors: Flat Standard**



ADDITIONAL SPONSORSHIP & EXHIBITION OPPORTUNITIES

For all sponsorship & exhibition items (excluding advertisement options), the Sponsor/Exhibitor will benefit from the below listed acknowledgement opportunities:

- * Acknowledgement on the congress website with a logo with hyperlink to Sponsors/Exhibitors website
- * Acknowledgement in the final programme e-book, at Sponsors & Exhibitors' section with logo and 100-words profile
- * Presence with logo at virtual lobby together with all sponsors/Exhibitors of the congress
- * Acknowledgement with logo in the post- congress reports and information

INDUSTRY SPONSORED SYMPOSIUM

9.000 EUR

Opportunity for the direct introduction of your products, pipeline, expertise to the audience

Industry Symposium slots are available within the scientific programme. Two slots of 45 minutes and two parallel halls are available for industry symposia.

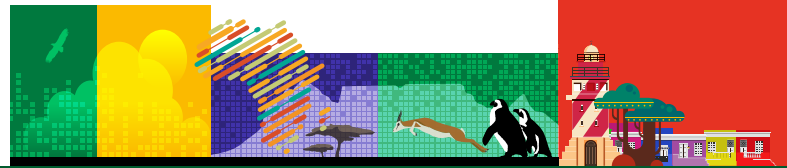
Allocation of the slot and hall preference is subject to availability. The allocation of the industry symposia slots will be confirmed on a "first come first served" basis.

The content of the industry symposium is subject to the approval of the Scientific Committee. Kindly note that it might be preferable for you to create a more interactive content for the industry symposium in order to attract more audience. Please contact the Congress Organisers for the technical infrastructure of the virtual system and additional/optional functions for creating the interactivity (e.g., Q&A and poll functions, etc.).

Sponsors of industry sponsored symposia are responsible for obtaining the relevant information and complying with all national and international rules and regulations related to advertising and promotion of all products and services mentioned as part of the industry session. Advertising of any specific product does not mean acceptance by ESCV and KENES. It is the full responsibility of the corporation that it is in accordance with the European laws, where applicable.

In addition to the general benefits to be provided for the congress sponsors, Industry Symposia will be acknowledged:

- on the related section of the congress website
- in the related section of the programme e-book
- in one e-newsletter of the virtual congress
- opportunity to display a video / banner / looping presentation on a digital screen in the virtual lobby (1 digital screen will be used for all industry symposias and videos/banners/ppt of those symposia will be looping on this screen back-to-back.)
- as pdf / video invitation for the industry symposia, in the Virtual Congress bags (pdf and videos to be provided by the Sponsors)



ADDITIONAL SPONSORSHIP & EXHIBITION OPPORTUNITIES

VIRTUAL EXHIBITION

3.000 EUR

2D booth in the virtual Exhibition Hall includes

- Company Name and Logo
- Company Profile
- Documents, Video and Images
- Content hyperlinks for company's website, products, news and social media accounts

Additional Features:

- Interactive Chat (Group and 1:1 chat, including video calls)
- Contact Us
- Ability to see visiting attendees at the booth



Different color alternatives are available. (e.g. blue, dark blue, green, dark green, yellow, orange, red, purple).

ADVERTISEMENT IN THE FINAL PROGRAM E-BOOK

GBP 4.250

Sponsor's full color advertisement will be published online on the designated section of the program e-book. Specifications for the advertisements will be advised by the Congress Organisers.

Inside back cover

Limited to 1 company

2.000 EUR

Inside front cover

Limited to 1 company

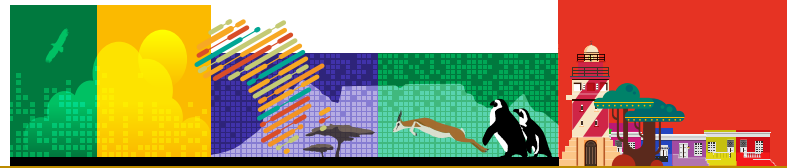
2.000 EUR

Inside full page

1.500 EUR

Inside ½ page

900 EUR



APPLICATION, PAYMENT & CANCELLATION POLICIES

GENERAL CONDITIONS & APPLICATION PROCESS

Please click here to reach the online booking portal for WFPICCS 2022 - 11th World Congress of the World Federation of Pediatric Intensive & Critical Care Societies



Once a booking form is submitted and the payment method is selected, a confirmation will be mailed to the Sponsor/Exhibitor with an accompanying invoice.

Please note that submission of a booking form indicates the acceptance of all TERMS & CONDITIONS specified within the booking portal. The booking form(s) will be held as a valid liable contract, by which both parties will be bounded.

PAYMENT PLAN & CONDITIONS

All payments including the ones from last minute sponsors are required to be finalized prior the congress dates. Payment conditions indicated below will be applied for all sponsorship, exhibition, advertisement and display applications.

- 1st Payment 50% Upon confirmation of the sponsorship / exhibition item
- 2nd Payment 50% Until March 14, 2022

PAYMENT METHODS

Payments can be made via bank transfer or credit card. Kindly note that individual and/or corporate cheques are not acceptable.

Payment via Bank Transfer:

Bank account details are as below. After the bank transfer, the proof of payment is required to be sent to the Virtual Congress Organizers.

ACCOUNT NAME : WFPICCS 2022, Cape Town
ACCOUNT NO : 1500934-92-322
IBAN (EUR) : CH51 0483 5150 0934 9232 2
BANK NAME : Credit Suisse
BRANCH : Genève
SWIFT CODE : CRESCHZ80A
ADDRESS OF THE BANK : Rue de la Monnaie
1-3 | 1204 Genève | Switzerland

Payment via Credit Card:

Visa, Mastercard and AMEX are accepted through the online booking portal. Please finalize your payment during the booking process.

CANCELLATION POLICY

Any request for the cancellation of sponsorship/exhibition items must be sent to the Congress Organisers in writing. The following cancellation policy will apply:

- For cancellations between March 14, 2022; 50% of the total amount will be invoiced and charged as a cancellation fee, and the rest of the amount less the bank charges will be refunded.
- For cancellations on or after March 15, 2022; full sponsorship/exhibition amount will be invoiced and charged, and no refunds will be made.
- All relevant refunds will be made within 30 days after the congress dates.



wfpiccs.org/wfpiccs-2022