



For Pediatric Sepsis

# PEDIATRIC SEPSIS DATA COLAB

## YEAR IN REVIEW

# 2021

### advocacy and prevention

In 2021, the CoLab launched a collaborative research study, “**Saving young lives: Triage and management of sepsis in children using the point-of care Paediatric Rapid Sepsis Trigger (PRST) tool,**” in partnership with the **University of British Columbia (UBC)**, the **Kenyan Medical Research Institute (KEMRI)**, and **Walimu** in Uganda. The study aims to develop an accessible and affordable mobile tool that can be used by health workers to **rapidly triage pediatric patients in low resource settings**.

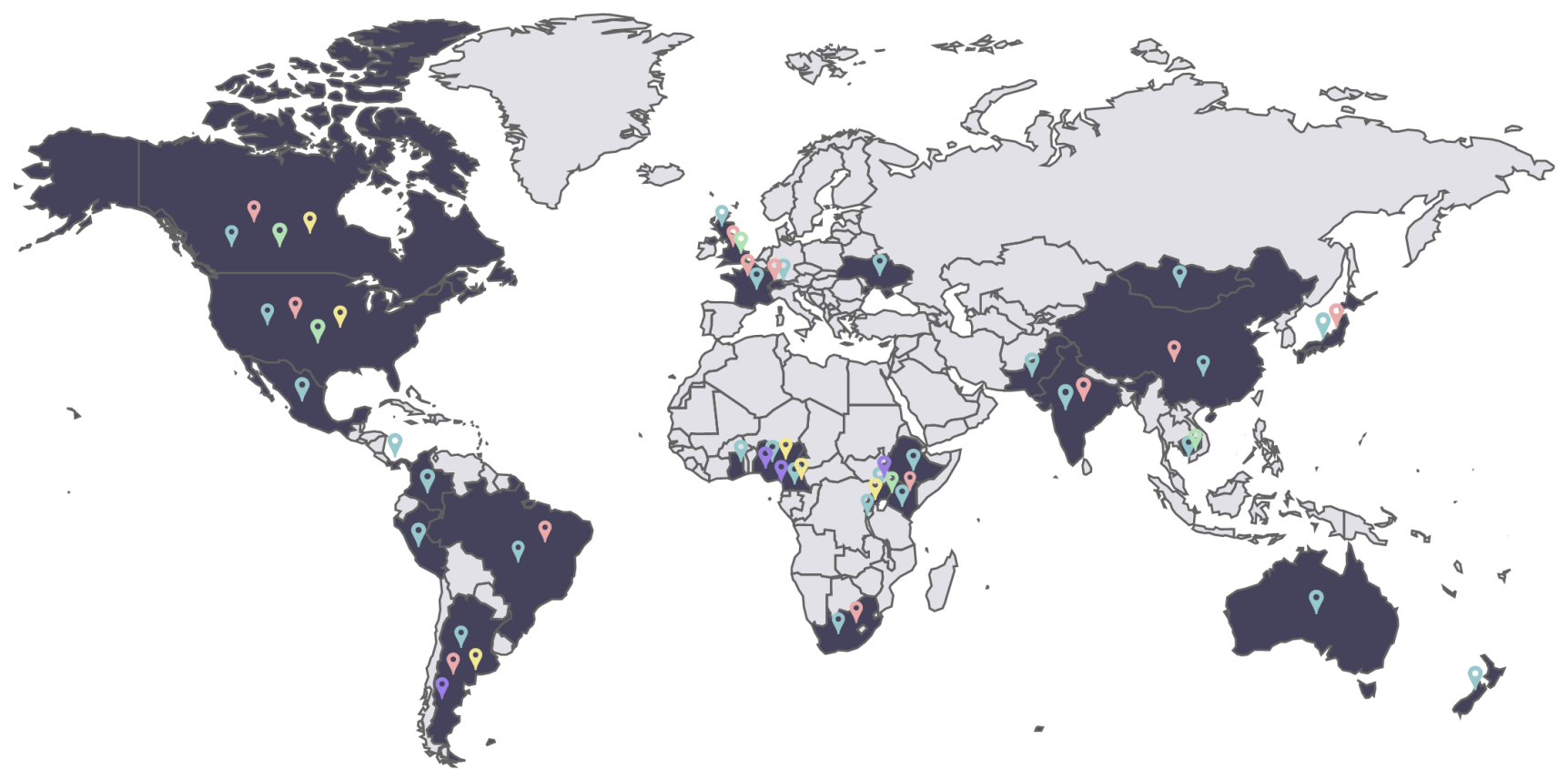
The study is using the **Sepsis CoLab’s Environmental Scan** to assess health facility readiness to provide pediatric sepsis care. To date, the Environmental Scan has been completed at **4 facilities in Uganda**.

As of November 2021, **10,934** patients have been enrolled.

Our manuscript “**Common data elements for predictors of pediatric sepsis: A framework to standardize data collection**” was published in PLOS One on June 10, 2021. This manuscript describes the systematic review and 5-step Delphi process used to develop a common data element set for **pediatric sepsis predictors** at the point of triage in **resource limited settings** to serve as a standardized framework for data collection for future studies.

<https://doi.org/10.1371/journal.pone.0253051>

### strengthen collaborations



The Sepsis CoLab network currently spans **29 countries** across **6 continents**.

Our network includes:

- Steering Committee - 13 members
- Predictors Working Group - 10 members
- Environmental Scan Working Group - 13 members
- Sepsis CoLab - 116 members

### knowledge translation



Through 2021, the launch of the Sepsis CoLab was promoted throughout existing networks hosted by **WFPICCS** and the **Centre for International Child Health (CICH)**. The CoLab's successes continue to be shared through quarterly newsletters, social media channels, and at conference presentations.

The Sepsis CoLab held a Lunch & Learn on **October 15, 2021** to share lessons learned from the CoLab's approach to **Open Data**. Presenters Dr. Mark Ansermino, Maggie Woo Kinshella, and Jessica Trawin discussed how to **Optimize the Reuse of Clinical Data**.



For Pediatric Sepsis

# PEDIATRIC SEPSIS DATA COLAB

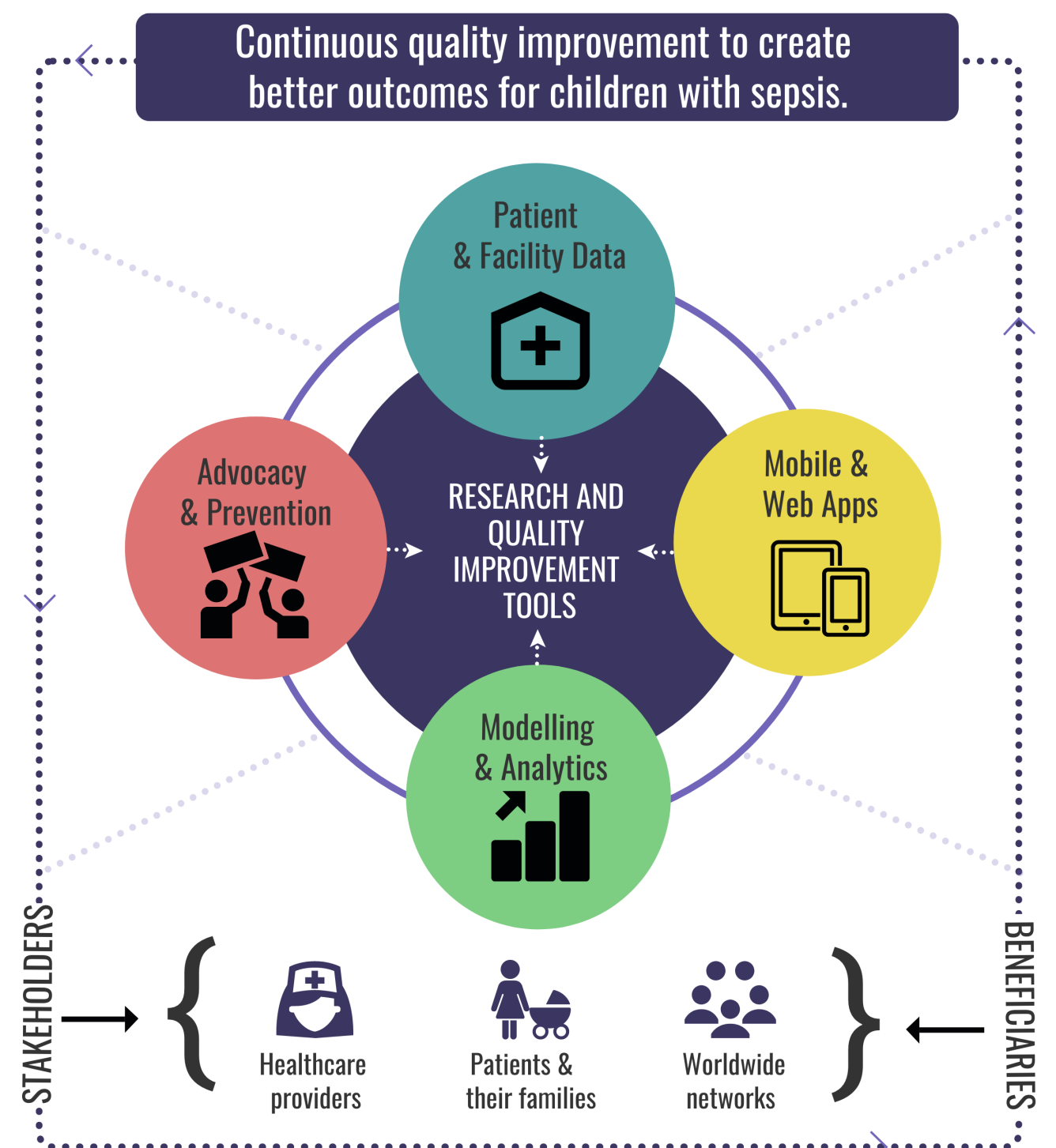
## YEAR IN REVIEW

# 2021

## quality improvement

The **Pediatric Sepsis Data CoLab** and the **Centre for International Child Health (CICH)** in partnership with the **World Federation of Intensive and Critical Care Societies (WFPICCS)** and the **Environmental Scan Working Group** have developed a 5-phase survey for evaluating health facility readiness to provide care to critically ill children. The Environmental Scan has been piloted in health facilities in **Uganda, Cameroon, Argentina, and Nigeria**.

The Sepsis CoLab is working with experts across Latin America to launch a **regional quality improvement program** to improve sepsis care as well as with Elvis Dzelamunyuy Suiyven with the **Cameroon Association of Critical Care Nurses (CACCN)** to implement a quality improvement project in Bamenda District, Cameroon. Both projects will begin in early 2022 and will utilize the CoLab's **Environmental Scan** to assess the impacts on care.



## data curation & open data

**Dataverse** is an open-source data repository used to share, preserve, cite, explore, and analyze research data. The Sepsis CoLab owns **9** of the University of British Columbia's (UBC) **42** **sub-dataverses**.

Our **9 sub-dataverses** are comprised of **17 datasets** and 66 files with over **658 asset downloads**. The Sepsis CoLab has welcomed **116 new members** since our launch in Fall 2020.

join  
us



Visit us on LinkedIn:  
<https://bit.ly/3CbCAXZ>

Sepsis CoLab Members are provided with **networking opportunities** and **mentorship** as well as access to our Dataverse, enabling them to 1) **access guidelines, tools, algorithms, and many other resources**; 2) **access and share data through data sharing agreements**; and 3) **securely store data**.

## global & local partners



The  
**Dataverse**  
Project