



# PEDIATRIC SEPSIS DATA COLAB

# 2024

## YEAR IN REVIEW

wfpiccs.org/pediatric-sepsis-colab

## Data Driven QI: From Local to Global



Collect



Anonymize



Agree



Share



Reuse



Inform



Improve

## 2024 PEDIATRIC SEPSIS DATA CHALLENGE

The 2024 Pediatric Sepsis Data Challenge is on! Hosted by the Institute for Global Health, Sepsis CoLab, WFPICCS, and Duke University, this competition brings together **91 teams from 40 countries** to develop open-source algorithms predicting in-hospital mortality in children. Using a synthetic dataset based on clinical data from Uganda, participants are driving innovation in pediatric sepsis detection.

Running from November 4, 2024, to April 28, 2025, the challenge fosters global collaboration, empowering participants of all backgrounds to sharpen their skills in clinical risk prediction.

Learn more about the Challenge [here](#).



### World Shared Practice Forum Podcast



### Improving Sepsis Care: A Data-Driven Approach

Niranjan "Tex" Kissoon, MBBS, FRCP(C), MCCM, FACPE  
British Columbia Children's Hospital  
Mark Ansermino, MBChB  
British Columbia Children's Hospital  
Samuel Akech, MD  
KEMRI-Wellcome Trust

OPENPEDIATRICS

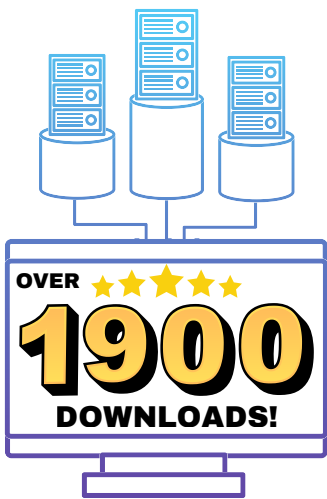
## NEW PODCAST ALERT!

In this insightful episode of the World Shared Practice Forum, OPENPediatrics presents "Improving Sepsis Care: A Data-Driven Approach." Join Drs. Niranjan Kissoon, Mark Ansermino, and Samuel Akech as they explore the Pediatric Sepsis Data CoLaboratory (Sepsis CoLab)!

In this discussion, the Sepsis CoLab Steering Committee members discuss the challenges related to the collection and sharing of data in a global context, the latest advancements in sepsis research and treatment, and how they believe this work will drive better patient outcomes. This is a must-listen for healthcare professionals, researchers, and anyone interested in improving outcomes through global collaboration and data-sharing initiatives.

- Watch on [YouTube](#)
- Listen on
  - [YouTube Music](#)
  - [SoundCloud](#)
  - [Spotify](#)
  - [Apple Podcasts](#)

## SEPSIS COLAB DATAVERSE



**23** SUB-DATAVERSES

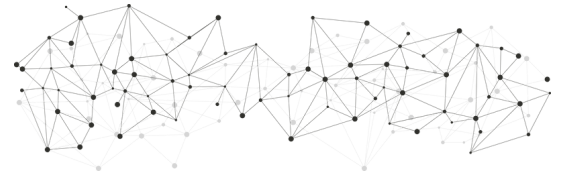
↳ **70** DATASETS

↳ **306** FILES

- Guidelines
- Digital Adaptation Kits
- De-identified patient data
- Data collection tools
- QI + Open Data Training Resources
- + more

Including **20 new datasets** uploaded this year!

## NETWORK GROWTH



We are excited to share that the Sepsis CoLab has grown by **27 new members from 14 different countries** this year. This incredible expansion continues to strengthen our global reach and foster collaboration. Thank you to all who have joined us! We look forward to the insights, innovation, and progress that will emerge from this growing network in 2024 and beyond!

## DATASET SPOTLIGHT

The Pediatric Acute Lung Injury and Sepsis Investigators (PALISI) Network has deposited a new dataset from their systematic review and meta-analysis titled "[Etiology of Hospital Mortality in Children Living in Low- and Middle-Income Countries.](#)" This study synthesized data from 253 observational studies published between January 1, 2005, and February 26, 2021, covering 21.8 million pediatric hospitalizations across 59 LMICs.

Findings indicate an all-cause pediatric hospital mortality rate of 4.1%, with the leading causes of death being infectious diseases, respiratory conditions, and gastrointestinal issues. These results highlight the urgent need for targeted global child health initiatives and resource allocation to reduce hospital mortality in LMICs, emphasizing the importance of equitable access to basic emergency and critical care services.

## Become a Member

Need Data?

Got Data?

Join Us!



### MENTORSHIP

From Pediatric Sepsis experts



### NETWORKING

With over 200 members from 53 countries



### DATA ACCESS & STORAGE

>200 resources, including guidelines, tools, and de-identified patient data



[MEMBERSHIP APPLICATION](#)



[sepsiscolab@bcchr.ca](mailto:sepsiscolab@bcchr.ca)

[wfpiccs.org/pediatric-sepsis-colab](http://wfpiccs.org/pediatric-sepsis-colab)

